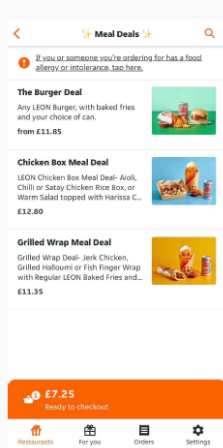


Just Eat Pay

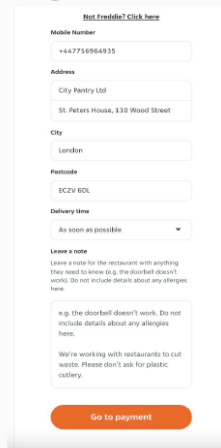
Onboarding Guide for Eaters



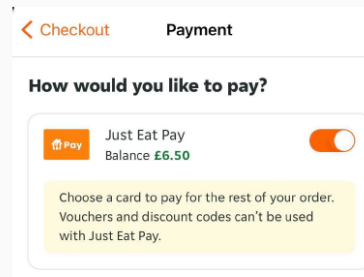
How to use Just Eat Pay: Ordering Online



Log in to your Just Eat account using your chosen email address. Choose your restaurant and make your choices.

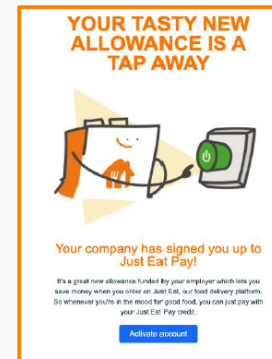


Confirm your delivery address and click go to payment.



Choose to use Just Eat Pay and place your order!

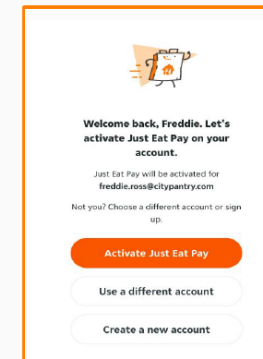
Before using Just Eat Pay, you must activate your Just Eat Pay allowance



Once your admin has given you an allowance for the first time, you will receive an activation email from just eat.

Click 'Activate Account'.

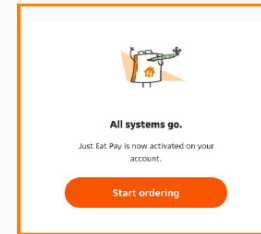
If you do not receive this email, simply ask your admin to resend the activation email.



Choose which Just Eat account you wish to activate your Just Eat Pay allowance on. You can choose your work or personal account.

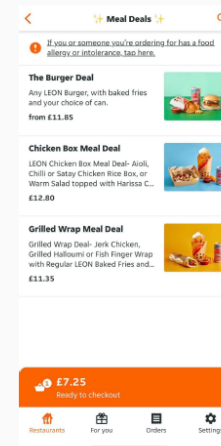
If you do not have an account, you will be asked to create one.

Click 'Activate Just Eat Pay'.

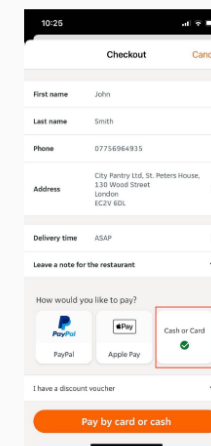


Once you have successfully activated, you can start ordering!

How to use Just Eat Pay: Ordering through the App



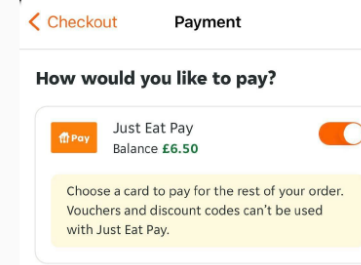
Log in to your Just Eat account using your chosen email address. Choose your restaurant and make your choices.



Confirm your address.

Select 'Cash or card'.

Click on 'Pay by Cash or Card'.



Use the toggle to turn on your Just Eat Pay allowance and place your order!